

Access Risers - Kor Flo™

Applications

Orenco's Access Risers provide access to septic tank openings and can be cast into the tops of concrete tanks, bonded in place, or bolted down using a riser tank adaptor. They can also be used as valve enclosures.

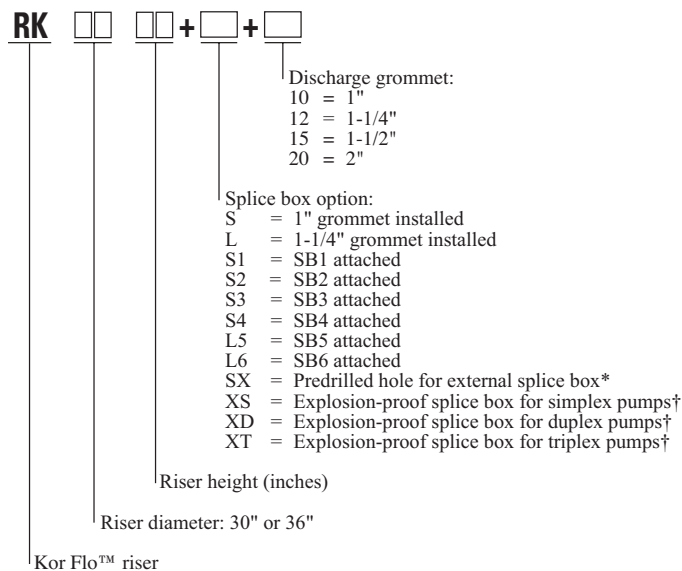
General

Kor Flo™ Access Risers are constructed of 30-in. or 36-in. (nominal diameter) ribbed PVC pipe. Risers are available in heights corresponding to the pipe ribs' spacing. Kor Flo risers have bolt catches that allow an Orenco fiberglass lid to be secured to them.

Standard Models

RK30XX, RK36XX.

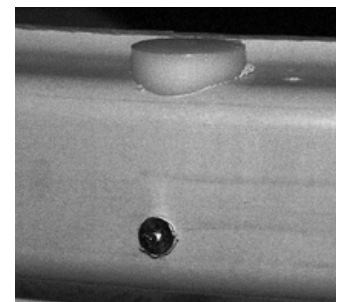
Nomenclature



* Minimum riser height 18"
† Used in Class 1 Division 1 environments



Bolt catch on 30-in. riser



Bolt catch on 36-in. riser

Materials of Construction

Pipe:	PVC
Bolt catch:	HDPE

Specifications

Dimensions	Model RK30	Model RK36
I.D	30.88 in. (784 mm)	35.5 in. (902 mm)
O.D. including ribs	32.13 in. (816 mm)	38.75 in. (984 mm)
Rib spacing	2 in. (51 mm)	2.65 in. (67 mm)
Weight	18 lb/ft (27 kg/m)	39 lb/ft (58 kg/m)

Kor Flo™ is a trademark of Royal Pipe Systems