

Biotube® EasyPak™ Installation

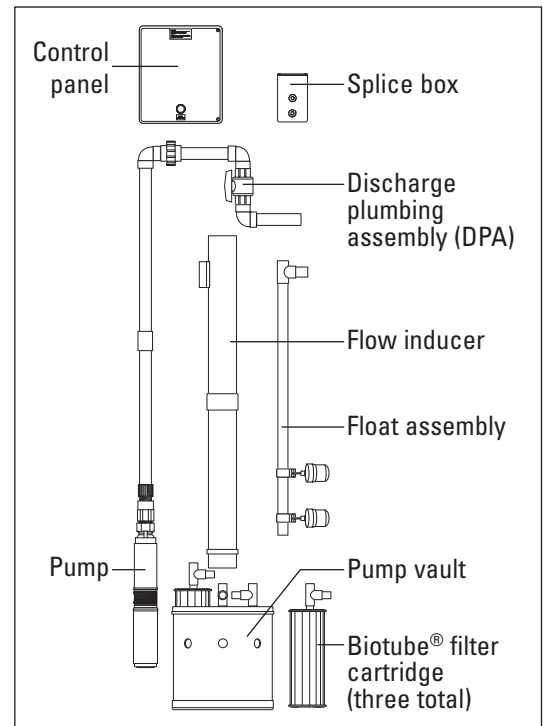
Installation Instructions

Before You Begin

This guide covers prepping and installing the Biotube® EasyPak™ kit.* For instructions on installing and wiring your splice box, see the Oreco® document *Splice Boxes: Installation, Operation, and Maintenance Instructions Model SB_* (EIN-SB-SB-1). For instructions on installing and wiring your control panel, see the Oreco document *Panel Installation* (EIN-CP-GEN-1). Read and understand all of these instructions before you install your EasyPak kit.

Before starting your installation, make sure that the EasyPak kit you have matches your system's needs. Open the Biotube EasyPak box and check the contents of the box for compatibility with your system. Make sure you have the correct adapter for your discharge plumbing assembly-to-discharge line connection. Also check that the pump included with your EasyPak kit meets the head and flow requirements for your system.

You'll need to know the float heights specified for your system. If these are not specified on the system plans, contact the system's designer.



Biotube® EasyPak™ kit components

Step 1: Prep the Vault Assembly

NOTE: You will need PVC cement for these steps.

Step 1a: Rotate the cartridge handles on the filter cartridges away from the center hole.

WARNING: DO NOT apply primer to the vault cap. The cap is ABS and primer will weaken the joint.

Step 1b: Glue the bottom of the flow inducer (the end with the retaining ring) into the center hole of the vault cap.

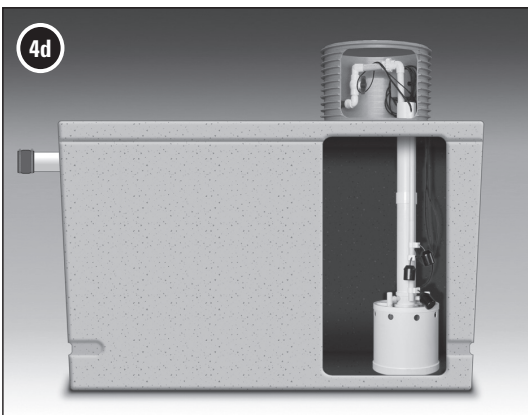
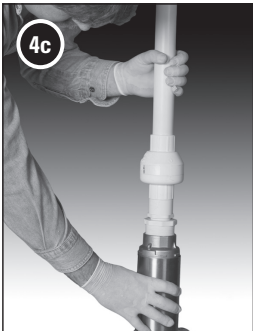
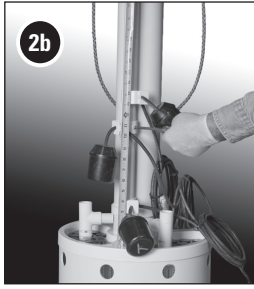
Step 1c: Glue the upper and lower halves of the flow inducer together. Position the upper half so the float assembly, when installed, will not interfere with removal of the filter cartridges.

Step 1d: Rotate the cartridge handles to their secured position, facing inwards.



* Biotube® EasyPak™ U.S. Patents #4,439,323 and #5,492,635. Other patents pending.

Installation Instructions (continued)



Step 2: Prep the Float Assembly

NOTE: You will need PVC cement for these steps.

Step 2a: Glue the upper and lower halves of the float assembly.

Step 2b: Clip the float assembly into the float bracket on the flow inducer and adjust the float levels.

Step 3: Install the Vault Assembly

CAUTION: Do not let the float cords fall into the tank when you install the vault assembly.

Step 3a: Make sure the filter cartridge handles are secured against the flow inducer, and use the lifting strap to gently lower the vault assembly into the tank.

Step 3b: Coil the float cords and secure them out of the way in the riser.

Step 4: Prep and Install the Discharge Plumbing Assembly (DPA)

CAUTION: Do not lift the pump by the cord. Doing so can damage the pump.

NOTE: Be sure to make any adjustments to the DPA (lengthening or shortening, if necessary) before installing the pump/DPA assembly.

NOTE: You will need PVC cement, Teflon® tape or paste, and pipe lubricant for these steps.

Step 4a: Glue the straight sections of the DPA together.

Step 4b: Apply Teflon paste or tape to the threads on the bottom of the DPA, and screw it into the top of the pump.

Step 4c: Connect the DPA pieces together at the union.

Step 4d: Lower the pump/DPA assembly into the flow inducer. Coil the pump cord and secure it in the riser. Lubricate the DPA discharge nipple and the riser discharge grommet, and run the nipple through the grommet.

CAUTION: If electrical connections are not immediately made, be sure that the pump and float cords are secured in the riser, not hanging in the tank, to prevent water from wicking up the cords and damaging components.

Step 5: Install the Splice Box

For information on installing the splice box, see *Splice Boxes: Installation, Operation, and Maintenance Instructions Model SB_ (EIN-SB-SB-1)*.*

Step 6: Install and Wire the Control Panel

For information on installing and wiring the control panel, see *Panel Installation (EIN-CP-GEN-1)*.*

* These documents are included with the components to which they refer. You can also download them from Orenco's Document Library at www.orenco.com.